



WINSPERT

WINSPERT

P.O.W.E.R

PREPARATION OF ADC WITH WINSPERT EXPERT REVIEW

NOTES

By Dr. Jigyasa Sharma





Dear Students,

We'd like to remind you about the importance of respecting the integrity of the resources provided in our app.

Please be aware that **WINSPERT POWERNOTES ARE COPYRIGHTED CONTENT. Unauthorized use, including screenshots, copying, misuse, reuse, or resale of any content from this app, is strictly prohibited.**

Our app monitors and records all screenshots and recordings. Violators will face strict legal action.

We're committed to providing you with the best tools for your success, and we appreciate your cooperation in maintaining a fair and secure learning environment.

Thank you for your understanding and continued dedication.

Best regards,
WINSPERT TEAM

PROFESSIONALISM

SBQ 1

SAVANNAH 14Y OLD AND DOG

14-YEAR-OLD GIRL BOUGHT HER SERVICE DOG. SHE WAS EMOTIONALLY DEPENDENT ON HER DOG.

YOU HAD CONSENT FOR HER CHECKUP FOR TODAY.

I. Where will the service dog be while you are doing the examination. Her dog was helping her with disability. She was from a remote community. She was aboriginal.

- A. Inside operator room
- B. At reception area at a spot where girl can see the dog
(at a place outside dental operator but pt can see from operator)
- C. At the reception where it can be taken care by the receptionist
- D. Tell her politely that dog is not allowed in the operator
- E. The dog should wear muzzle before entering the operator
- F. Inside the operator room with the leash

II. You decide some treatment, Whose consent will you take?

- A. Parents or legal guardian
- B. Girl
- C. Community leader
- D. School teacher
- E. Disability carer (disability organization)

III. When will you schedule the appointment for the patient?

- A. After the school hours of this patient
- B. Immediately
- C. In the normal clinical hours
- D. Last patient of the day

THIS IS COPYRIGHTED CONTENT. Unauthorized use, including screenshots, copying, misuse, reuse, or resale of any content from this app, is strictly prohibited. Our app monitors and records all screenshots and recordings. Violators will face strict legal action.

DISCLAIMER

THIS IS COPYRIGHTED CONTENT. Unauthorized use, including screenshots, copying, misuse, reuse, or resale of any content from this app, is strictly prohibited. Our app monitors and records all screenshots and recordings. Violators will face strict legal action.

DISCLAIMER
THIS IS COPYRIGHTED CONTENT. Unauthorized use, including screenshots, copying, misuse, reuse, or resale of any content from this app, is strictly prohibited. Our app monitors and records all screenshots and recordings. Violators will face strict legal action.

PROFESSIONALISM

P.O.W.E.R NOTES SBQ 1

I. Assistance or service dogs

These support dogs are rigorously trained to facilitate the participation of people with disability (sight loss, epilepsy etc) in various aspects of personal and public life and provide an essential function. The Commonwealth Disability Discrimination Act 1992 (DDA) sets out in section 9 the legal definition of an assistance animal as a dog or other animal that: (a) is accredited under a State or Territory law to assist a person with a disability to alleviate the effects of disability; or (b) is accredited by an animal training organisation prescribed in regulation; or (c) is trained to assist a person with a disability to alleviate the effects of the disability and meets standards of hygiene and behaviour that are appropriate for an animal in a public place. These dogs are permitted in the private practice, including clinical areas, with a patient.

II. She's a 14-year-old girl with disability and today the appointment is for the check-up. 14yrs falls under mature minor. Only in certain situations such as emergency treatment, they can give the consent. If treatment is required, the consent should be given by the parent or the legal guardian.

III. The kid must be tired after the school hours. So, option (A) is ruled out.

Immediate treatment can't be given as she needs to get the consent from the parents. Option (B) is ruled out.

With disability they have specific parking requirements, may be the patient might be on a wheelchair and it's not clearly mentioned in the scenario. So, the best option is the last patient of the day as in the normal clinical hours the clinic might be busy.

THIS IS COPYRIGHTED CONTENT. Unauthorized use, including screenshots, copying, misuse, reuse, or resale of any content from this app, is strictly prohibited. Our app monitors and records all screenshots and recordings. Violators will face strict legal action.

DISCLAIMER

THIS IS COPYRIGHTED CONTENT. Unauthorized use, including screenshots, copying, misuse, reuse, or resale of any content from this app, is strictly prohibited. Our app monitors and records all screenshots and recordings. Violators will face strict legal action.

THIS IS COPYRIGHTED CONTENT. Unauthorized use, including screenshots, copying, misuse, reuse, or resale of any content from this app, is strictly prohibited. Our app monitors and records all screenshots and recordings. Violators will face strict legal action.

THIS IS COPYRIGHTED CONTENT. Unauthorized use, including screenshots, copying, misuse, reuse, or resale of any content from this app, is strictly prohibited. Our app monitors and records all screenshots and recordings. Violators will face strict legal action.

THIS IS COPYRIGHTED CONTENT. Unauthorized use, including screenshots, copying, misuse, reuse, or resale of any content from this app, is strictly prohibited. Our app monitors and records all screenshots and recordings. Violators will face strict legal action.

WINSPERT
P.O.W.E.R
NOTES

PROFESSIONALISM

SBQ 2

- I. You are having a meeting with your colleagues. One of the colleagues says he had a patient who was fighting at the reception using racist comments against the receptionist, and the receptionist is scared of the patient.
 - A. Ask him to apologize
 - B. Take him to the separate room and try to resolve the issue
 - C. Ask him to leave
 - D. Ask him that it is against professional ethics, and you cannot treat him.
- II. Patient came with her husband, she has injuries, and history is not matching the nature of the injuries. When asked further the husband was getting aggressive, we are suspicious that it is the case of abuse.
 - A. Do not treat the patient until you get the complete history.
 - B. Call the police.
 - C. Provide her discrete contact details of social services

P.O.W.E.R NOTES SBQ 2

- I. Some patients will display antisocial or aggressive behaviour. All the practitioners have the right to feel safe at work and to maintain a safe environment for their staff and other patients. Aggressive, threatening or abusive or racist behaviour should not be tolerated. Dentists are under no obligation to treat a patient and can terminate the dentist-patient relationship, provided it's not for discriminatory reason and they offer the patient alternative options for their care. Therefore, racist issues can not be resolved as you cannot change their perspectives. So, you can tell the patient that it's against the professional ethics and cannot treat him.
- II. Patient has injuries and the history is not matching with the nature of the injuries. In such cases you will not treat until you get the complete history. Then if anything is suspicious you may call the police and the authorities. You never provide the discrete contact details of social services to the patient as it's the dentist's responsibility to inform and patient is already scared.

DISCLAIMER

THIS IS COPYRIGHTED CONTENT. Unauthorized use, including screenshots, copying, misuse, reuse, or resale of any content from this app, is strictly prohibited. Our app monitors and records all screenshots and recordings. Violators will face strict legal action.

DISCLAIMER
THIS IS COPYRIGHTED CONTENT. Unauthorized use, including screenshots, copying, misuse, reuse, or resale of any content from this app, is strictly prohibited. Our app monitors and records all screenshots and recordings. Violators will face strict legal action.

DISCLAIMER

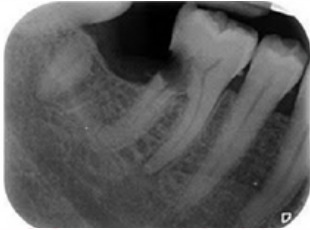
THIS IS COPYRIGHTED CONTENT. Unauthorized use, including screenshots, copying, misuse, reuse, or resale of any content from this app, is strictly prohibited. Our app monitors and records all screenshots and recordings. Violators will face strict legal action.

PROFESSIONALISM

SBQ 3

NEW VARIATION OF SEP24 QUESTION

A PATIENT COMES TO YOU WITH A CHIEF COMPLAINT OF PAIN IN LOWER LEFT BACK TOOTH REGION. HE IS ALLERGIC TO SOYABEAN, MILK AND PEANUTS. THIS EXACT IOPAR WAS GIVEN.



I. What can be the cause of pain in the patient?

- A. Root fragment
- B. Distal caries

II. What kind of habit causes this pattern of lesion in 36?

- A. Aggressive use of interdental brushes
- B. Aggressive use of floss
- C. Food lodgement between previously extracted tooth and this tooth

III. What should you ask the patient to determine the cause of lesion in 35?

- A. Reason for the cause of extraction of adjacent tooth
- B. Use of hygiene aids
- C. Time since extraction of adjacent tooth

IV. What intervention cannot be given to the patient due to his allergies?

- A. Chlorhexidine
- B. CPP-ACP
- C. Varnishes

THIS IS COPYRIGHTED CONTENT. Unauthorized use, including screenshots, copying, misuse, reuse, or resale of any content from this app, is strictly prohibited. Our app monitors and records all screenshots and recordings. Violators will face strict legal action.

DISCLAIMER

THIS IS COPYRIGHTED CONTENT. Unauthorized use, including screenshots, copying, misuse, reuse, or resale of any content from this app, is strictly prohibited. Our app monitors and records all screenshots and recordings. Violators will face strict legal action.

THIS IS COPYRIGHTED CONTENT. Unauthorized use, including screenshots, copying, misuse, reuse, or resale of any content from this app, is strictly prohibited. Our app monitors and records all screenshots and recordings. Violators will face strict legal action.

DISCLAIMER
THIS IS COPYRIGHTED CONTENT. Unauthorized use, including screenshots, copying, misuse, reuse, or resale of any content from this app, is strictly prohibited. Our app monitors and records all screenshots and recordings. Violators will face strict legal action.

THIS IS COPYRIGHTED CONTENT. Unauthorized use, including screenshots, copying, misuse, reuse, or resale of any content from this app, is strictly prohibited. Our app monitors and records all screenshots and recordings. Violators will face strict legal action.

PROFESSIONALISM

P.O.W.E.R NOTES SBQ 3

- I. In the x-ray caries are clearly visible. So, the pain is due to the dental caries.
- II. It's distal caries and it's not a cervical abrasion. If it's an abrasion, then the answer would be (A). floss could not have done this. Floss can lead to gingival injury. Among the given best answer is option (C).
- III. Food impaction is the cause of the lesion. So, inadequate oral hygiene can lead to dental caries. Therefore, use of oral aids and how they maintain oral hygiene is an important question to ask.
- IV. Patient is allergic to soya bean, milk and peanuts.
 CPP-ACP (Casein Phosphopeptide-Amorphous Calcium Phosphate) is contraindicated in individuals with a known milk protein allergy, as it is derived from milk casein, and should not be used by people with severe sensitivity to dairy products; caution should also be exercised when using CPP-ACP on young children due to potential choking hazards with certain delivery methods.

THIS IS COPYRIGHTED CONTENT. Unauthorized use, including screenshots, copying, misuse, reuse, or resale of any content from this app, is strictly prohibited. Our app monitors and records all screenshots and recordings. Violators will face strict legal action.

DISCLAIMER

THIS IS COPYRIGHTED CONTENT. Unauthorized use, including screenshots, copying, misuse, reuse, or resale of any content from this app, is strictly prohibited. Our app monitors and records all screenshots and recordings. Violators will face strict legal action.

THIS IS COPYRIGHTED CONTENT. Unauthorized use, including screenshots, copying, misuse, reuse, or resale of any content from this app, is strictly prohibited. Our app monitors and records all screenshots and recordings. Violators will face strict legal action.

DISCLAIMER

THIS IS COPYRIGHTED CONTENT. Unauthorized use, including screenshots, copying, misuse, reuse, or resale of any content from this app, is strictly prohibited. Our app monitors and records all screenshots and recordings. Violators will face strict legal action.